

Northwest



NorthwestOracleUsersGroup

PeopleSoft NorthWest
REGIONAL USERS GROUP

Summit



SMACT Works[®]
Excellence with Integrity

ORACLE

**Gold
Partner
Cloud Standard**

“Leading Practices for PeopleSoft Selective Adoption”

Presented by:

Peter Koutroubis, EVP of Operations

S.M.A.C.T. = Social Mobile Analytic Cloud Technologies

- Founded in 2013 Oracle Cloud Partner
- Headquarters in Dublin, Ohio
- 150+ U.S. Based Oracle Specialized Expert



ISO Certified



- ISO 27001:2013 - Information Security
- ISO 9001:2015 - Quality Management

ORACLE[®]
ANALYTICS CLOUD

Managed Projects
Implementations
Module Add-ons
Assessments

ORACLE[®]
CLOUD

Application Managed Support Services
Functional Configuration
Report Development
Integration & Security

ORACLE[®]
Cloud Infrastructure

ORACLE[®]
BUSINESS INTELLIGENCE

Managed Projects
Implementations
Module Add-ons
Assessments

ORACLE[®]
PeopleSoft

Application Managed Support Services
System and Database Administration
Custom Bolt-on Development
Integration & Security



Individual On-demand Subject Matter Experts
Oracle Cloud (ERP, SCM, HCM, Student, CX)
Functional and Technical SMEs

Individual On-demand Subject Matter Experts
PeopleSoft (FSCM, HCM, Campus Solutions, CRM)
Functional and Technical SMEs



Selective Adoption

Agenda:

Review PeopleSoft Selective Adoption and the related components.

Organize teams and processes to regularly deploy new functionality.

PeopleSoft Selective Adoption

Learning Objectives:

Understand the PeopleSoft components related to Selective Adoption.

Develop a strategy from reactive to a proactive PeopleSoft organization.

Develop a roadmap and set schedule for adopting features/functions.

3,749+ New Features - PeopleSoft *has innovated*

PeopleSoft is Innovative & Investing

- 930 **HCM** Features
- 927 **FMS** Features
- 356 **SCM** Features
- 145 **CRM** Features
- 516 **Campus Solutions** Features
- 724 **PeopleTools** Features
- 22 **iHub / Portal** Features
- 129 **PeopleSoft Cloud Manager** Features

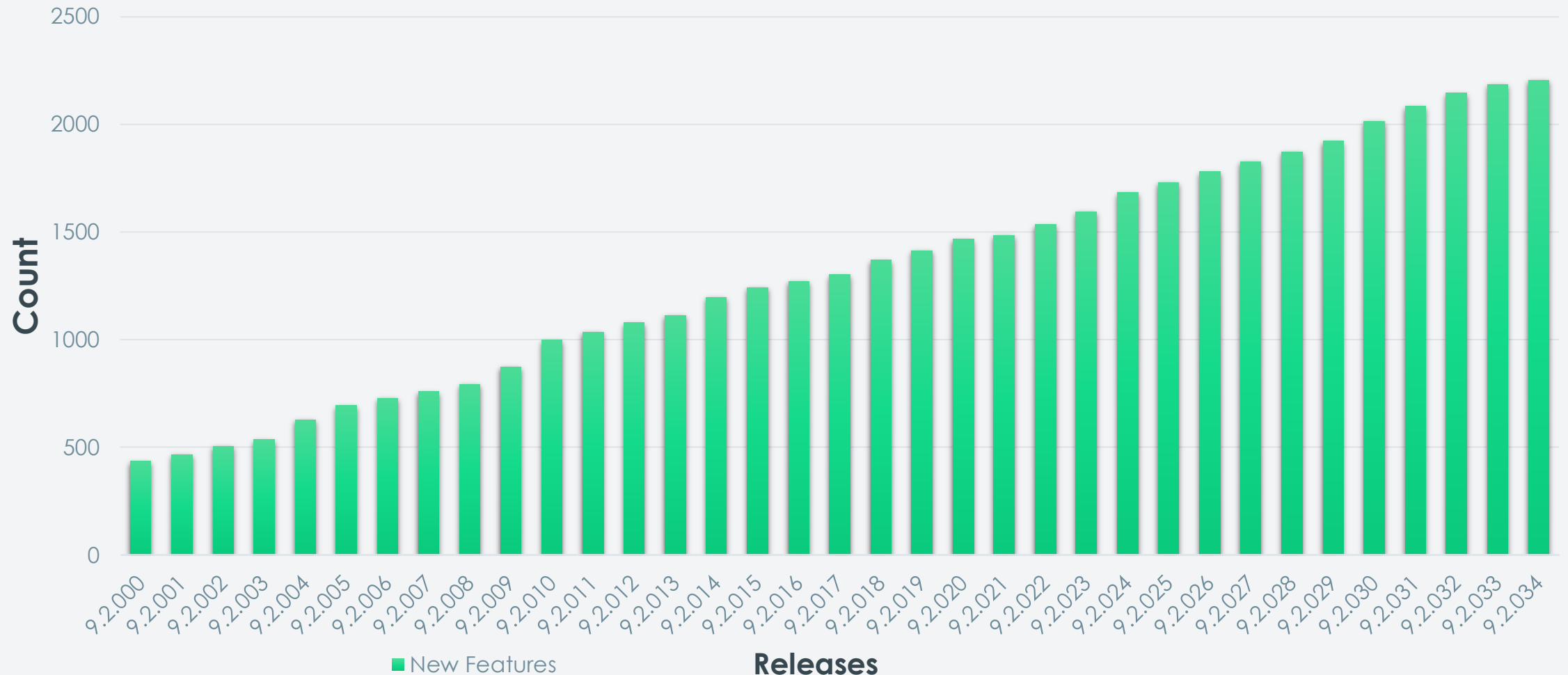
New Features as of
September 2023,
many more are
planned



A lot of new ideas, turned into effective features

New Functions – 3,749 PeopleTools – 5.60

New Features - 9.2 – 9.2.x
HCM - FMS - SCM - iHub - CRM - CS



PeopleSoft Selective Adoption

Selective Adoption Process:

A process that customers select changes they want and when they want.

The Collection of PeopleTools that make up Selective Adoption:

- Change Assistant
- PeopleSoft Update Manager (PUM)
- PeopleSoft Test Framework (PTF)
- Data Migration Workbench
- Usage Monitor

PeopleSoft Selective Adoption

The Collection of PeopleTools that make up Selective Adoption:

Change Assistant: Stand alone, Windows based, Java program that orchestrates the process of updating or upgrading your system.

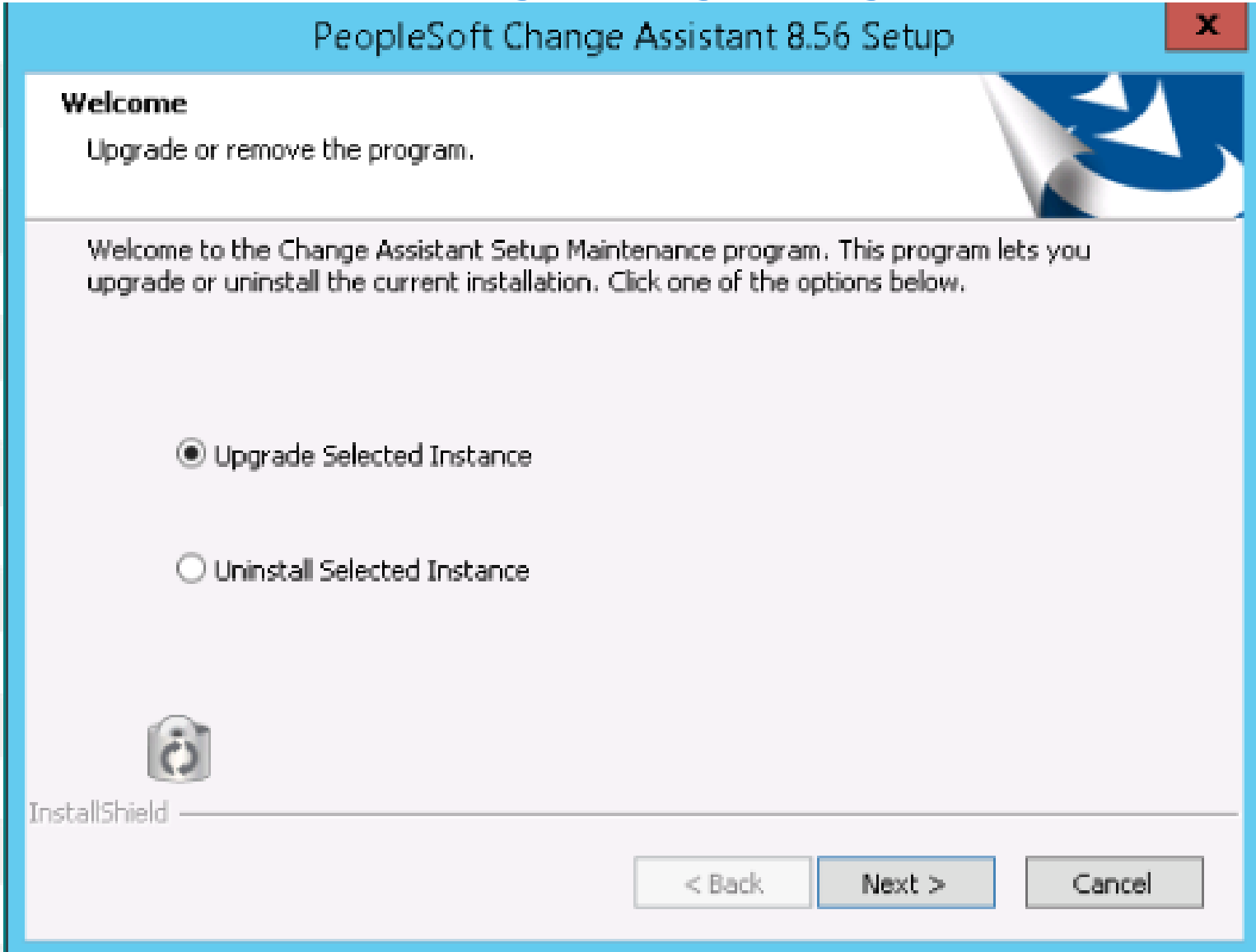
PeopleSoft Update Manager (PUM): Lifecycle management process used with the PUM PIA application, which runs on the PeopleSoft Image (PI) database.

PeopleSoft Test Framework (PTF): Test plans and test scripts for PeopleSoft test automation.

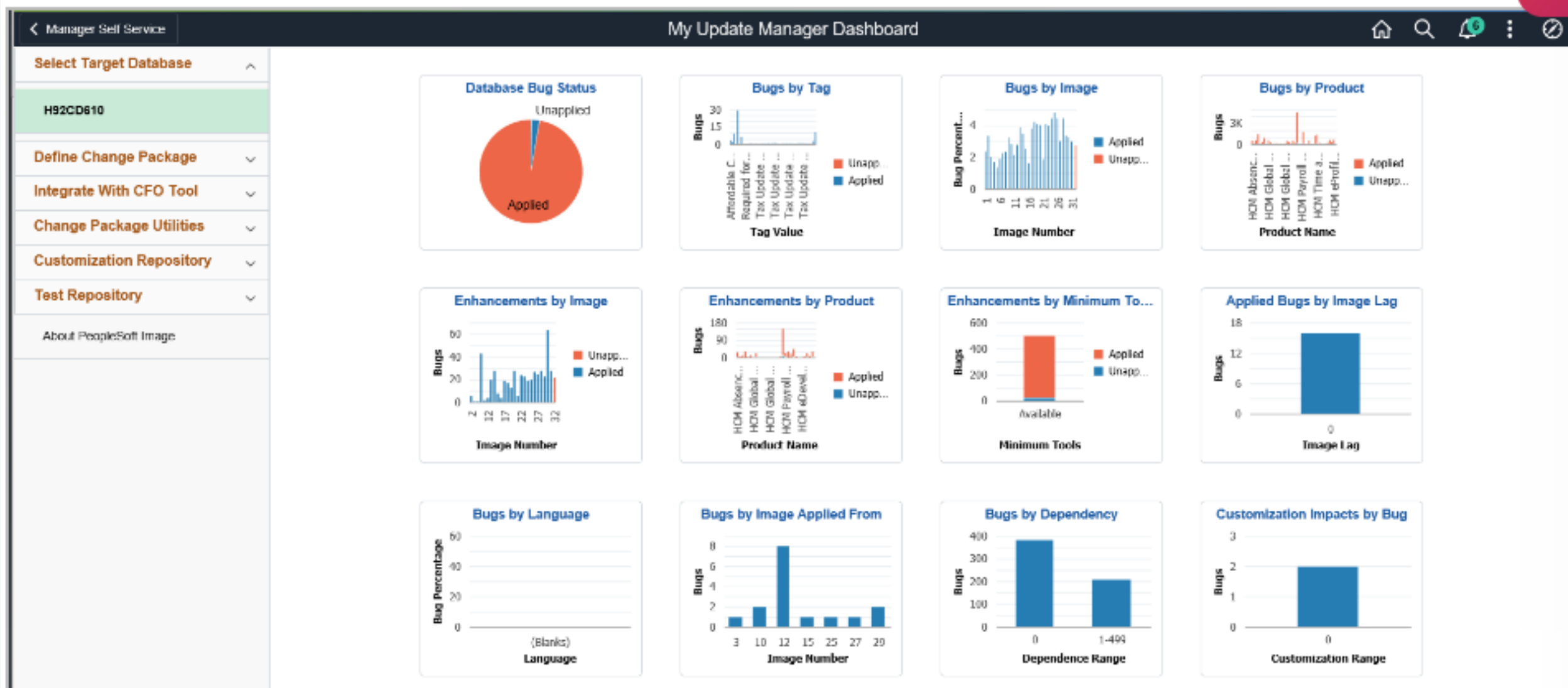
Data Migration Workbench: Facilitates the configuration management process using Application data sets. Designed to manage the complexity of migrating configuration data across multiple PeopleSoft systems.

Usage Monitor: Provides additional information for analysis when determining test coverage with PTF.

Change Assistant: Stand alone, Windows based, Java program that orchestrates the process of updating or upgrading your system.



PeopleSoft Update Manager (PUM): Lifecycle management process used with the PUM PIA application, which runs on the PeopleSoft Image database.



Data Migration Workbench: Facilitates the configuration management process using Application data sets. Designed to manage the complexity of migrating configuration data across multiple PeopleSoft systems.

PeopleTools > Lifecycle Tools > Migrate Data > Data Migration Workbench

Project Search

Find an Existing Value New Window | Help | Personalize Page

Enter any information you have and click Search. Leave fields blank for a list of all values.

Search Criteria

Project Name Add a New Value

Description [Load Project From File](#)

*Project Name

*Description

Data Migration Workbench

Project Name: PFC_MIGRATION

Description: PFC Migration Example

Comments:

Project State: New project

Progress:

Project Content

Data Set Name: ↩

Data Set Name	Description	Is Co
EOCC_CONFIGURATION	Page and Field Configurations	Y

Insert Data Set Content

This page allows users to identify and insert instances of data into the project. Users can limit the scope of the result set by entering and refining search criteria.

Project Name: PFC_MIGRATION

Data Set Name: EOCC_CONFIGURATION Page and Field Configurations

Search Criteria

Component Name Begins with

Market Begins with

Case Sensitive [Advanced Search](#)

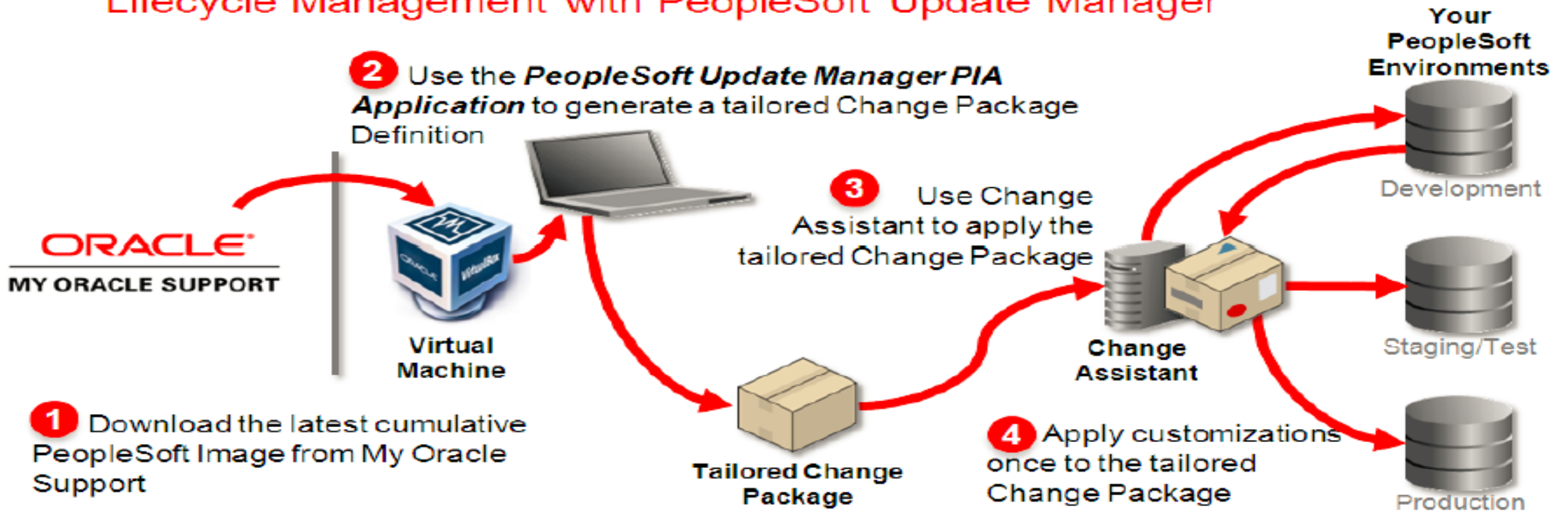
Search Results

Select	Component Name	Market	Description
<input checked="" type="checkbox"/>	URL_TABLE	OBL	Example for Migration

PeopleSoft Selective Adoption

PeopleSoft Maintenance

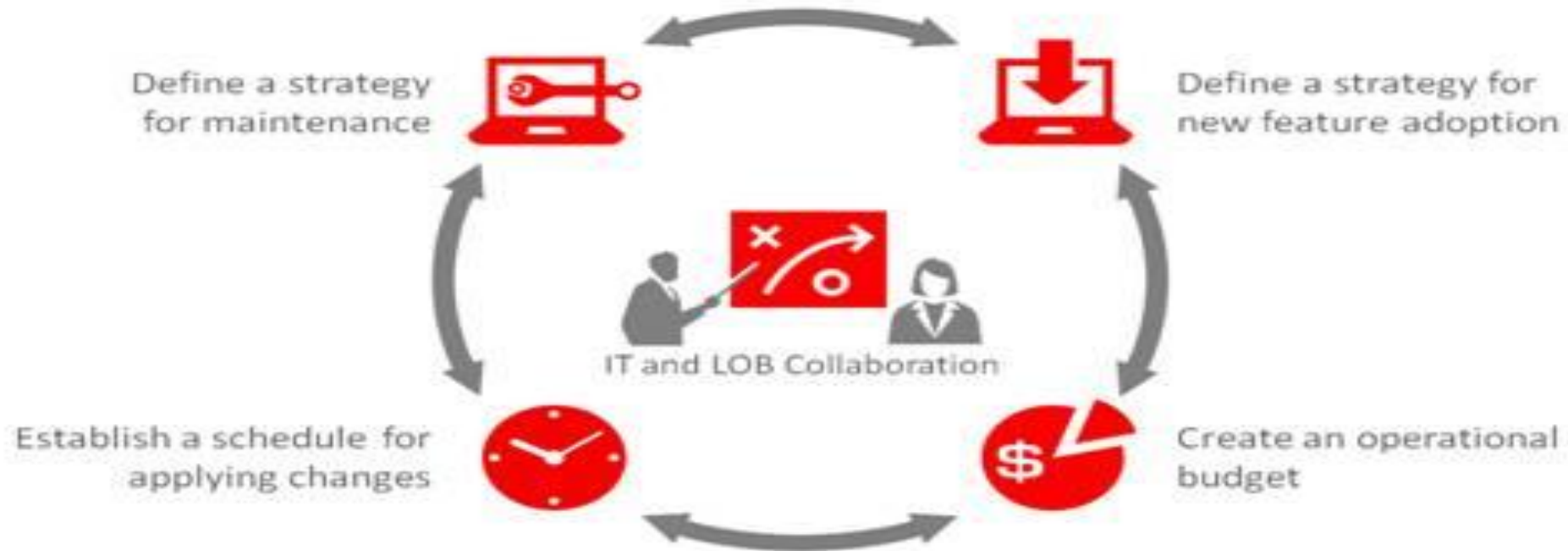
Lifecycle Management with PeopleSoft Update Manager



ORACLE

PeopleSoft Selective Adoption Strategy

Employ a Selective Adoption Strategy for PeopleSoft
Formulate a Comprehensive Strategy



Copyright © 2016, Oracle and/or its affiliates. All rights reserved. |

Key Concepts of Selective Adoption

Key Concepts of Selective Adoption

Oracle changed the availability of PeopleSoft updates. Oracle has a “Continuous Delivery Model” – initially it was every quarter.

- Delivery of New Features 3 Times a Year
- Get New Features without Upgrading
- Take only the New Features You Want, When You Want
- Maintenance Changes Automatically Included

PeopleSoft Continuous Delivery Model Comparison	
Old: Bundles and Updates	New: Selective Adoption
Frequent maintenance	Frequent maintenance
Take all maintenance	Take selective maintenance
Recommend staying current	Client Determines stay current strategy
Infrequent enhancements	Frequent enhancements
Major upgrade every 3–4 years	No major upgrades
No incremental changes	Incremental changes 3 times/year

PeopleSoft Selective Adoption Change

Does not eliminate the typical activities associated with change or long term need to update the incrementally releases to the system:

- Business Process
 - Assess and Prioritize desired feature release adoption with the functional users
 - Scheduling time for incremental changes verses periodic major changes
 - Develop a sensible maintenance strategy
- Testing Cycle
- End User Training

Oracle's Lifetime Support Policy

Oracle's maintenance policies have changed:

Oracle used to recommend staying current with and apply bundles in the correct sequence which no longer apply in the Selective Adoption Process:

- Users can now skip maintenance or choose what to apply.
- Applying changes is easier in 9.2 allowing people to more easily stay current.

Lifetime Support Policy Components at a Glance

	Premier Support	Extended Support	Sustaining Support
Major Product and Technology Releases	✓	✓	✓
Technical Support	✓	✓	✓
Access to Knowledge Base (Oracle MetaLink/ PeopleSoft Customer Connection/Siebel SupportWeb)	✓	✓	✓
Updates, Fixes, Security Alerts, datafixes, and Critical Patch Updates	✓	✓	Pre-Existing Only
Tax, Legal, and Regulatory Updates	✓	✓	No
Upgrade Scripts	✓	✓	Pre-Existing Only
Certification with most existing Third-Party Products	✓	✓	No
Certification with most new Third-Party Products	✓	No	No
Certification with most new Oracle products	✓	No	No
Certification with most existing Oracle products	✓	✓	No

Oracle's Lifetime Support Policy

Lifetime Support Policy Components at a Glance

	Premier Support	Extended Support	Sustaining Support
Major Product and Technology Releases	✓	✓	✓
Technical Support	✓	✓	✓
Access to Knowledge Base (Oracle MetaLink/ PeopleSoft Customer Connection/Siebel SupportWeb)	✓	✓	✓
Updates, Fixes, Security Alerts, datafixes, and Critical Patch Updates	✓	✓	Pre-Existing Only
Tax, Legal, and Regulatory Updates	✓	✓	No
Upgrade Scripts	✓	✓	Pre-Existing Only
Certification with most existing Third-Party Products	✓	✓	No
Certification with most new Third-Party Products	✓	No	No
Certification with most new Oracle products	✓	No	No
Certification with most existing Oracle products	✓	✓	No

Link: <https://www.oracle.com/us/assets/lifetime-support-applications-069216.pdf>

Oracle's Lifetime Support Policy

Oracle's PeopleSoft Continuous Innovation Releases Effective 9-25-23

Oracle PeopleSoft Continuous Innovation Releases

Product	Latest Release	GA Date	Premier Support Through at least	Extended Support	Sustaining Support
CRM	21	Aug 2023	Dec 2034	Not Applicable	Indefinite
CS	29	Jun 2023	Dec 2034	Not Applicable	Indefinite
ELM	23	Jul 2023	Dec 2034	Not Applicable	Indefinite
FMS/ESA/SCM	48	Jul 2023	Dec 2034	Not Applicable	Indefinite
HCM ²	47	May 2023	Dec 2034	Not Applicable	Indefinite
Portal Solutions	16	Jul 2023	Dec 2034	Not Applicable	Indefinite

For additional details see the [Lifetime Support Summary for PeopleSoft Releases \(Doc ID 2238983.2\)](#).

PeopleSoft / PeopleTools Premium Support Policy

PeopleTools Premium Support:

- Available until the next release of PeopleTools (every 12-18 months between) is released then for an additional twelve (12) months. Then Extended Support (limited) for twelve more months before entering Sustaining Support.
- Customers must be on the latest release of PeopleTools to take advantage of the latest features related to the product set.

Proactive Organization

A proactive Organization will create the business processes and inter-departmental synergy to capitalize on the benefits of the continuous innovation delivery model in all PeopleSoft pillars they have in production (HCM, FMS, SCM, CS, CRM)

- Interdepartmental Collaboration
- Business to Information Technology
- Research, Planning, Analysis
- System Implementation
- Testing



Proactive Organization

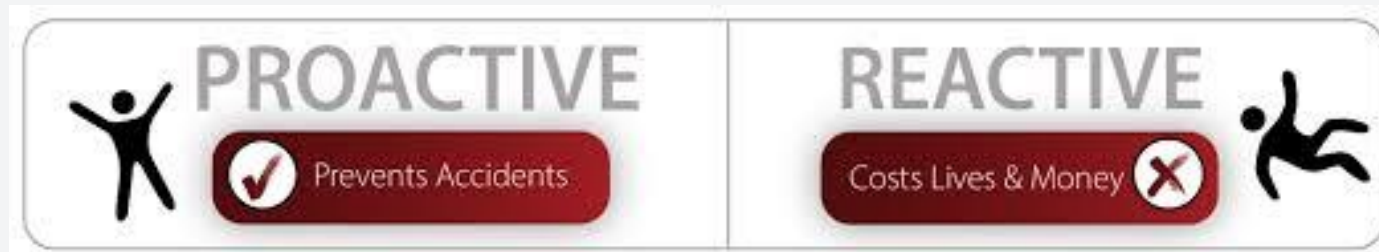
Who is involved?

All Pillars OR Business Units:
HCM, FMS, SCM, CRM, CS

Information Technology Group

What is involved?

- Focus on incremental changes
- Stay current with PeopleTools
- Create an annual schedule
- Frequent maintenance
- Automate testing



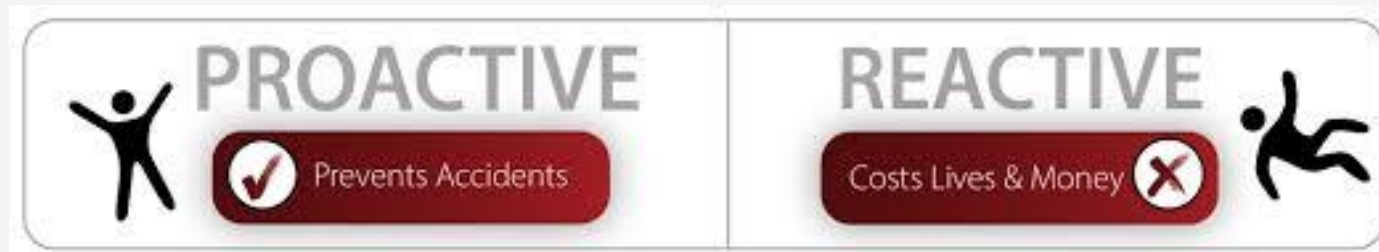
Proactive Organization

What has changed?

No More Upgrades
Projects are different
Roles have changed

What is the impact?

- Cost of updates budgeted annually; Funding distributed
- Business Analyst (BA) must look at the maintenance delivered in PUMs
- BA & IT must analyze PUMs to against customization for replacement
- Review of maintenance log to determine what maintenance should be applied



Planning an annual schedule

Schedule maintenance, new features, and customization review

- Maintenance:
 - Bug Fix, Legislation & Regulation
 - System readiness; Opportunity cost
 - Stay current
- Enhancements:
 - Evaluated
 - Rolled out incrementally

Planning an annual schedule

Example Scheduled	Task Name	2022	2023												
		Dec	Jan	Feb	Mar	Apr	May	Jun	Jul	Aug	Sep	Oct	Nov	Dec	
Minor release 4 times annually 1.5 to 2 month projects Regulations and Bug Fix Minor User Requests Feb, May, August, Nov	Minor Maintenance Release		[Black bar]												
	Minor Release A		[Green bar]												
	Minor Release B				[Green bar]										
	Minor Release C						[Green bar]								
	Minor Release D											[Green bar]	[Green bar]		
Major Release 2 times annually 5 month projects New Enhancements Stay current plan April, September	Major Release		[Black bar]												
	Primary		[Red bar]												
	Secondary							[Red bar]							

PeopleTools Maintenance

PeopleTools Premium Support:

- Available until the next release of PeopleTools (every 12-18 months between) is released then for an additional twelve (12) months. Then Extended Support (limited) for twelve more months before entering Sustaining Support.
- Customers must be on the latest release of PeopleTools to take advantage of the latest features related to the product set.

HCM Product(s)	Feature	Introduced In Version / Image	PeopleTools	Bug ID
Candidate Gateway	Added the ability to enable Screen Reader mode dynamically in Fluid Candidate Gateway and for applicants to set preferences for accessibility. This capability eliminates the need to set up different sites for Standard versus Screen Reader mode in Fluid Candidate Gateway.	HCM 9.2 Update Image 39 (9.2.039)	8.59.00	32631482
Enterprise Learning Management	Enhanced the Chatbot Integration Framework Core Services to make it compliant with Oracle REST Standard.	ELM 9.2 Update Image 22 (9.2.022)	8.59.00	33244310
General HCM Enhancements	Added enhancements to support portal navigation search enhancements in 8.59, which include updates to portal labels, descriptions, keywords, and synonyms.	HCM 9.2 Update Image 39 (9.2.039)	8.59.00	32903738
General HCM Enhancements	Added the Review Navigation Search Updates utility, which enables you to review updated content reference labels, descriptions, and keywords delivered in Navigation Search Updates. The utility also enables you to manage which updates are applied to your production environment.	HCM 9.2 Update Image 41 (9.2.041)	8.59.00	33528455
General HCM Enhancements	Added the Global Chatbot Configuration component, which enables you to create a global chatbot that is visible across all components within a PeopleSoft portal.	HCM 9.2 Update Image 42 (9.2.042)	8.59.00	33851423
Human Resources	Added the ability to enable Real Time Indexing (RTI) for the Job search index (HC_HR_JOB_DATA) to transmit data to Search when transactions are saved. This allows near real-time updates to your indexed data. This feature uses PeopleTools search technology and is recommended for PeopleTools release 8.59.07 or higher.	HCM 9.2 Update Image 42 (9.2.042)	8.59.04	33854968
Human Resources	Added the ability to enable Real Time Indexing (RTI) for the Person search index (HC_HR_PERSON) to transmit data to Search when transactions are saved. This allows near real-time updates to your indexed data. This feature uses PeopleTools search technology and is recommended for PeopleTools release 8.59.07 or higher.	HCM 9.2 Update Image 42 (9.2.042)	8.59.04	33854488
Talent Acquisition Manager	Added the ability to enable Real Time Indexing (RTI) for the Job Opening index to transmit data to Search when transactions are saved. This allows near real-time updates to your indexed data. This feature uses PeopleTools search technology and is recommended for PeopleTools release 8.59.10 or higher.	HCM 9.2 Update Image 43 (9.2.043)	8.59.04	34174220
Talent Acquisition Manager	Added the ability to enable Real Time Indexing (RTI) for Recruitment indexes to transmit data to Search when transactions are saved. This allows near real-time updates to your indexed data. This feature uses PeopleTools search technology and is recommended for PeopleTools release 8.59.11 or higher.	HCM 9.2 Update Image 43 (9.2.043)	8.59.04	34174498
Talent Acquisition Manager	Added the ability to enable Real Time Indexing (RTI) for the All Applicant index to transmit data to Search when transactions are saved. This allows near real-time updates to your indexed data. This feature uses PeopleTools search technology and is recommended for PeopleTools release 8.59.11 or higher.	HCM 9.2 Update Image 43 (9.2.043)	8.59.04	34174464
Talent Acquisition Manager	Added the ability to enable Real Time Indexing (RTI) for the Applicant index to transmit data to Search when transactions are saved. This allows near real-time updates to your indexed data. This feature uses PeopleTools search technology and is recommended for PeopleTools release 8.59.11 or higher.	HCM 9.2 Update Image 43 (9.2.043)	8.59.04	34174418
Talent Acquisition Manager	Added the ability to enable Real Time Indexing (RTI) for the Job Posting index to transmit data to Search when transactions are saved. This allows near real-time updates to your indexed data. This feature uses PeopleTools search technology and is recommended for PeopleTools release 8.59.10 or higher.	HCM 9.2 Update Image 43 (9.2.043)	8.59.04	34174354
Time and Labor	Delivered the Payable Time Trend and Payable Time Insights dashboards, which enable administrators and management to view visualizations for payable time data based on the Payable Time Search index. The index should be enabled for real time indexing, which is recommended for PeopleTools release 8.59.07 or higher.	HCM 9.2 Update Image 42 (9.2.042)	8.59.04	33851134
Time and Labor	Added the ability to enable Real Time Indexing (RTI) for Schedules indexes to transmit data to Search when transactions are saved. This allows near real-time updates to your indexed data. This feature uses PeopleTools search technology and is recommended for PeopleTools release 8.59.09 or higher.	HCM 9.2 Update Image 43 (9.2.043)	8.59.04	34192350

HCM Product(s)	Feature	Introduced In Version / Image	PeopleTools	Bug ID
Candidate Gateway	Added the ability to enable Screen Reader mode dynamically in Fluid Candidate Gateway and for applicants to set preferences for accessibility. This capability eliminates the need to set up different sites for Standard versus Screen Reader mode in Fluid Candidate Gateway.	HCM 9.2 Update Image 39 (9.2.039)	8.59.00	32631482
Enterprise Learning Management	Enhanced the Chatbot Integration Framework Core Services to make it compliant with Oracle REST Standard.	ELM 9.2 Update Image 22 (9.2.022)	8.59.00	33244310
General HCM Enhancements	Added enhancements to support portal navigation search enhancements in 8.59, which include updates to portal labels, descriptions, keywords, and synonyms.	HCM 9.2 Update Image 39 (9.2.039)	8.59.00	32903738
General HCM Enhancements	Added the Review Navigation Search Updates utility, which enables you to review updated content reference labels, descriptions, and keywords delivered in Navigation Search Updates. The utility also enables you to manage which updates are applied to your production environment.	HCM 9.2 Update Image 41 (9.2.041)	8.59.00	33528455
General HCM Enhancements	Added the Global Chatbot Configuration component, which enables you to create a global chatbot that is visible across all components within a PeopleSoft portal.	HCM 9.2 Update Image 42 (9.2.042)	8.59.00	33851423
Human Resources	Added the ability to enable Real Time Indexing (RTI) for the Job search index (HC_HR_JOB_DATA) to transmit data to Search when transactions are saved. This allows near real-time updates to your indexed data. This feature uses PeopleTools search technology and is recommended for PeopleTools release 8.59.07 or higher.	HCM 9.2 Update Image 42 (9.2.042)	8.59.04	33854968
Human Resources	Added the ability to enable Real Time Indexing (RTI) for the Person search index (HC_HR_PERSON) to transmit data to Search when transactions are saved. This allows near real-time updates to your indexed data. This feature uses PeopleTools search technology and is recommended for PeopleTools release 8.59.07 or higher.	HCM 9.2 Update Image 42 (9.2.042)	8.59.04	33854488
Talent Acquisition Manager	Added the ability to enable Real Time Indexing (RTI) for the Job Opening index to transmit data to Search when transactions are saved. This allows near real-time updates to your indexed data. This feature uses PeopleTools search technology and is recommended for PeopleTools release 8.59.10 or higher.	HCM 9.2 Update Image 43 (9.2.043)	8.59.04	34174220
Talent Acquisition Manager	Added the ability to enable Real Time Indexing (RTI) for Recruitment indexes to transmit data to Search when transactions are saved. This allows near real-time updates to your indexed data. This feature uses PeopleTools search technology and is recommended for PeopleTools release 8.59.10 or higher.	HCM 9.2 Update Image 43 (9.2.043)	8.59.04	34174498
Talent Acquisition Manager	Added the ability to enable Real Time Indexing (RTI) for the All Applicant index to transmit data to Search when transactions are saved. This allows near real-time updates to your indexed data. This feature uses PeopleTools search technology and is recommended for PeopleTools release 8.59.11 or higher.	HCM 9.2 Update Image 43 (9.2.043)	8.59.04	34174464
Talent Acquisition Manager	Added the ability to enable Real Time Indexing (RTI) for the Applicant index to transmit data to Search when transactions are saved. This allows near real-time updates to your indexed data. This feature uses PeopleTools search technology and is recommended for PeopleTools release 8.59.11 or higher.	HCM 9.2 Update Image 43 (9.2.043)	8.59.04	34174418
Talent Acquisition Manager	Added the ability to enable Real Time Indexing (RTI) for the Job Posting index to transmit data to Search when transactions are saved. This allows near real-time updates to your indexed data. This feature uses PeopleTools search technology and is recommended for PeopleTools release 8.59.10 or higher.	HCM 9.2 Update Image 43 (9.2.043)	8.59.04	34174354
Time and Labor	Delivered the Payable Time Trend and Payable Time Insights dashboards, which enable administrators and management to view visualizations for payable time data based on the Payable Time Search index. The index should be enabled for real time indexing, which is recommended for PeopleTools release 8.59.07 or higher.	HCM 9.2 Update Image 42 (9.2.042)	8.59.04	33851134
Time and Labor	Added the ability to enable Real Time Indexing (RTI) for Schedules indexes to transmit data to Search when transactions are saved. This allows near real-time updates to your indexed data. This feature uses PeopleTools search technology and is recommended for PeopleTools release 8.59.09 or higher.	HCM 9.2 Update Image 43 (9.2.043)	8.59.04	34192350

IT and Business Up-to-Date on Features and Changes



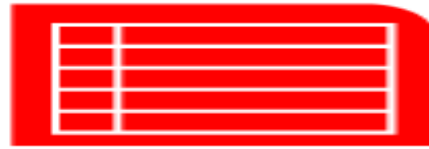
PeopleSoft
Information
Portal

https://docs.oracle.com/cd/E52319_01/infoportal/psa.html



PeopleSoft
Update
Manager
Homepage

<https://support.oracle.com/epmos/faces/DocumentDisplay?id=1641843.2>



Cumulative
Feature
Overview

https://apexapps.oracle.com/pls/apex/f?p=10319:8:3279700082317::NO::P8_PRODLIN:CS



Planned
Features and
Enhancements

<https://support.oracle.com/epmos/faces/DocumentDisplay?id=1966243.2>



PeopleSoft
Update
Manager
Dashboard

https://docs.oracle.com/cd/F13640_01/pt857pbr2/eng/pt/tswu/task_CreatingChangePackage.html?pli=ul_d177e145_tswu?pli=ul_d177e145_tswu

PeopleSoft Information Portal

PeopleSoft Information Portal

docs.oracle.com/cd/E52319_01/infoportal/index.html

Applications ▾ Tools and Frameworks ▾ Cloud and Lifecycle ▾ Customers and Innovation ▾ More ▾

Welcome to the PeopleSoft Information Portal

Everything you need to know in one place

COVID-19 updates for PeopleSoft customers [Learn More](#)

What's New https://docs.oracle.com/cd/E52319_01/infoportal/index.html

PeopleSoft Update Manager (PUM) Home Page

ORACLE MY ORACLE SUPPORT PowerView is Off Peter (Available) (0) Contact Us Help

Dashboard Knowledge Service Requests Patches & Updates Community More...

Give Feedback...

☆ PeopleSoft Update Manager (PUM) Home Page (Doc ID 1641843.2) To Bottom

Learning About PeopleSoft Update Manager PeopleSoft Update Image Home Pages Install and Upgrade Best Practices Troubleshooting

Search This Document Print

Learning About PeopleSoft Update Manager

- Welcome
- What's new with PUM?
- What is PeopleSoft Update Manager?
- Types of Patches
- Hardware and Software Requirements
- Using PeopleSoft Update Manager
- Training and Resources

PeopleSoft Update Image Home Pages

- PeopleSoft Update Image Home Pages
- HCM Update Image Home

PeopleSoft Update Manager Home Page

Welcome to the PeopleSoft Update Manager Home Page. This is the central location for all things related to PeopleSoft Update Manager (PUM) and PeopleSoft Update Images (PIs). Here you can find information about selective adoption, update image home pages, troubleshooting information, best practices, and more.

This list outlines some of the information in this home page and where you can find it:

- Just getting started? Use the links on the left to learn all about PeopleSoft Update Manager.
- Looking for your application's image home page? Use the PeopleSoft Update Manager Image Home Pages tab.
- Want to know about the Known Issues for your current image? See the Known Issues section on the Update Image Home Page for your product.

[Back To Top](#)

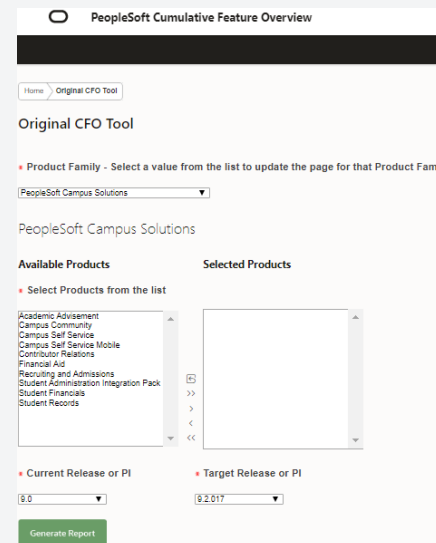
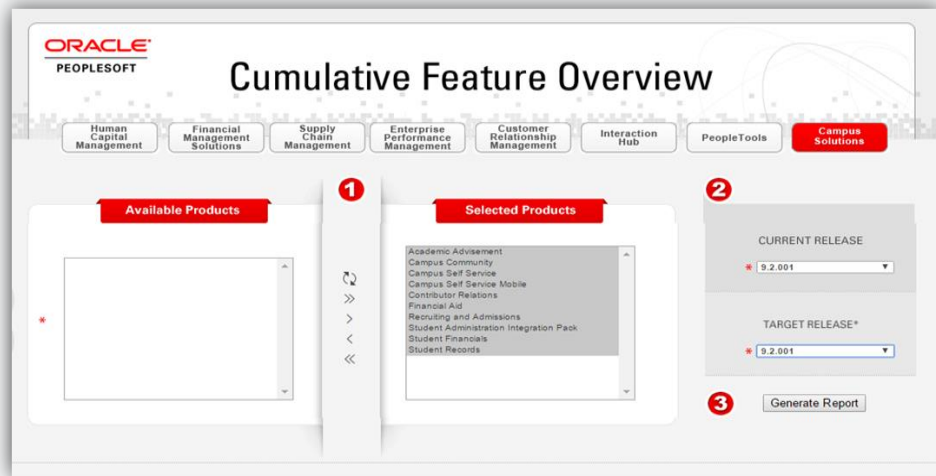
<https://support.oracle.com/epmos/faces/DocumentDisplay?id=1641843.2>

Oracle's Cumulative Feature Overview Tool

Cumulative Feature Overview (CFO) Tool

Oracle's online Reference guide to features and change related to PeopleSoft application releases. Show the latest PeopleSoft features available by suite of product (HCM, FSCM, CS, CRM, etc.) shows the corresponding version PeopleTools required to supports that them.

CFO LINK: https://apexapps.oracle.com/pls/apex/f?p=10319:8:3279700082317::NO::P8_PRODLINE:CS



Oracle's Cumulative Feature Overview Tool

ORACLE
PEOPLESFT

Cumulative Feature Overview

Human
Capital
Management

Financial
Management
Solutions

Supply
Chain
Management

Enterprise
Performance
Management

Customer
Relationship
Management

Interaction
Hub

PeopleTools

**Campus
Solutions**

Clo

Available Products

*

1

Selected Products

Academic Advisement
Campus Community
Campus Self Service
Campus Self Service Mobile
Contributor Relations
Financial Aid
Recruiting and Admissions
Student Administration Integration Pack
Student Financials
Student Records

2

CURRENT RELEASE

* 9.2.008

TARGET RELEASE*

* 9.2.012

3

Generate Report

Oracle's Cumulative Feature Overview Tool



Home > CFO Page > Report

Product(s)	Feature	Version	Introduced In Image/Bundle	Minimum Peopletools Version
Academic Advisement	Enhanced the View Academic Progress Summary Chart to allow institutions to choose the values used in the pie chart based on configuration options. The configuration options allow the institution to select the data source option of Unit Based, Course Based or Combined Unit and Course. An optional weighting field value allows for a more balanced calculation with the Combine Unit and Course option.	9.2.010	CS 9.2 Update Image 10. My Oracle Support - PeopleSoft Planned Features and Enhancements- Doc ID 1966243.2.	8.55
Campus Community	Previously, a maximum of 2 agreement pages could be defined in Task Configuration for use in an activity guide. The Task Management Framework and Task Configuration now allows for the inclusion of up to 9 agreement pages in a Fluid activity guide.	9.2.009	CS 9.2 Update Image 9. My Oracle Support - PeopleSoft Planned Features and Enhancements- Doc ID 1966243.2.	8.53.10

Oracle's Cumulative Feature Overview Tool

Product(s)	Feature	Introduced In Version / Image	Minimum PeopleTools Version	Bug ID	Documentation	Video Feature Overview					
PeopleSoft FMS 9.2	#	PeopleSoft SCM 9.2	#	PeopleSoft CS 9.2	#	PeopleSoft CRM 9.2	#	PeopleSoft HCM 9.2	#	PeopleTools 8.60	#
Asset Lifecycle Management	1	Catalog Management	1	Academic Advisement	13	Application General Information	6	Absence Management	44	Accessibility	12
Asset Management	88	Enterprise Components	3	Campus Community	102	CRM for Higher Education	3	Benefits Administration	24	Application Data Sets	22
Banks Setup and Processing	11	General FSCM Enhancements	111	Campus Self Service Mobile	1	General CRM Enhancements	63	Candidate Gateway	26	Application Designer	28
Billing	58	Global Components	4	Contributor Relations	1	HelpDesk	1	Enterprise Learning Management	87	Application Engine	13
Cash Management	19	Global Options and Reports	1	Financial Aid	181	HelpDesk for Human Resources	46	General HCM Enhancements	119	Automated Configuration Management	12
Commitment Control	5	Inventory	19	General CS Enhancements	27	Information Technology HelpDesk	7	Global Payroll	40	BI Publisher	23
Contracts	32	Mobile Inventory	5	Recruiting and Admissions	44	Multichannel Communications	3	Global Payroll for Australia	8	Change Assistant	23
Deal Management	6	Mobile Inventory Management	12	Student Financials	29	Online Marketing	5	Global Payroll for Brazil	17	Component Interfaces	3
Enterprise Components	4	Order Management	8	Student Records	118	Service Center for Higher Education	1	Global Payroll for China	1	Data Distribution Framework	2
Expenses	68	Purchasing	78	Total	516	Support	7	Global Payroll for France	5	Data Management	4
Financial Gateway	2	Services Procurement	10			Workforce Communications	3	Global Payroll for Hong Kong	1	Data Migration Workbench	5
General FSCM Enhancements	121	Strategic Sourcing	17			Total	145	Global Payroll for India	3	Data Mover	3
General Ledger	107	Supplier Contract Management	25					Global Payroll for Japan	3	Documents Technology	1
Global Components	8	Supply Planning	1					Global Payroll for Mexico	3	Global Technology	5
Global Options and Reports	9	eBill Payment	1					Global Payroll for New Zealand	2	Health Center	6
Grants	37	eProcurement	57					Global Payroll for Singapore	1	Install	21
In-Memory Project Discovery	5	eSupplier Connection	3					Global Payroll for Spain	1	Integration Broker	23
In-Memory Real Time Bottom Line	8	Total	356					Global Payroll for Switzerland	3	Lifecycle Management	3
Lease Administration	19	PeopleSoft Cloud Manager	#					Global Payroll for Thailand	1	Mobile Application Framework	15
Maintenance Management	38	Backup and Restore	4					Global Payroll for United States	4	MultiChannel Framework	8
Payables	89	Cloud Manager Update and Upgrade	3					Global Payroll for the United Kingdom	6	PeopleCode	42
Program Management	5	Environment Provisioning	72					Human Resources	220	PeopleSoft Fluid User Interface	56
Project Costing	37	Governance	7					In-Memory Labor Rules and Monitoring	1	Performance Monitor	4
Real Estate Management	23	Install and Configure	20					Payroll Interface	1	Pivot Grid	55
Receivables	85	Lift and Shift	13					Payroll for North America	71	Portal Technology	77
Resource Management	16	PeopleTools Upgrade and Patching	7					Talent Acquisition Manager	39	Process Scheduler	21
Staffing Front Office	2	Selective Adoption	3					Time and Labor	81	Push Notifications	2
Treasury	5	Total	129					eBenefits	13	Query	28
eBill Payment	12							eCompensation	6	Reporting Web Services	3
eSettlements	7							eCompensation Manager Desktop	7	SQR	4
Total	927							eDevelopment	10	Search Technology	57
								ePay	12	Security Administration	40
								ePerformance	35	Simplified Analytics	3
								eProfile	12	System and Server Administration	30
								eProfile Manager Desktop	23	Test Framework	32
								Total	930	Tree Manager	2
										Update Manager	26
										Usage Monitor	1
										User Interface	2
										Workflow Technology	2
										nVision	5
										Total	724

Planned Features and Enhancements

Copyright (c) 2020, Oracle. All rights reserved. Oracle Confidential.

PeopleSoft Planned Features and Enhancements (Doc ID 1966243.2)

PeopleSoft Planned Features and Enhancements | Technology | HCM | FSCM | Campus Solutions | PeopleSoft Investment Strategy

Search This Document Print

- PeopleSoft Planned Features and Enhancements
 - Welcome
 - Technology
 - PeopleSoft Technology Planned Features and Enhancements
 - HCM
 - HCM Planned Features and Enhancements
 - FSCM
 - FSCM Planned Features and Enhancements
 - Campus Solutions

PeopleSoft Planned Features and Enhancements

Use the tabs at the top of this page to view upcoming planned features and enhancements organized by product suite.

- Technology (PeopleTools and Cloud Manager)
- HCM (includes ELM and CRM)
- FSCM
- Campus Solutions

To find a specific feature by name, use the "Search this Document" field on the top of any page.

<https://support.oracle.com/epmos/faces/DocumentDisplay?id=1966243.2>

[Back To Top](#)

PeopleSoft Update Manager Dashboard

Contents

- Home
- Products
 - General Information
 - Development Tools
 - Reporting and Analysis Tools
 - Integration Tools
 - Administration Tools
- Lifecycle Management Tools
 - Change Assistant and Update Manager
 - Getting Started with PeopleSoft Change Assistant
 - Understanding The Environment Management Framework and PeopleSoft Change Assistant
 - Configuring and Running Environment Management Components

Update Manager Dashboard Overview

The Update Manager Dashboard provides a central location for all update tasks. The dashboard provides analytics for PUM (PeopleSoft Update Manager) that assist in determining your current level of maintenance. The various pivot grids provided on the dashboard, provide access into the maintenance logs and bug information for each database uploaded to the PeopleSoft Update Image. After drilling down onto a specific pivot grid, you can select bugs to include in a change package.

Image: Update Manager Dashboard

This example illustrates the fields and controls on the Update Manager Dashboard. You can find definitions for the fields and controls later on this page.

My Update Manager Dashboard

The dashboard screenshot displays the following pivot grids:

- Database Bug Status
- Bugs By Tag
- Bugs By Image
- Bugs by Product
- Enhancements by Image
- Enhancements by Product
- Enhancements by Minimum To...
- Applied Bugs by Image Lag
- Multi-Lingual Bugs By Language
- Bugs By Image Applied From
- Bugs By Dependency
- Customization Impacts By Bug

- 1.Database Bug Status
- 2.Bugs by Tag
- 3.Bugs by Product
- 4.Bugs by Image
- 5.Enhancements by Image
- 6.Enhancements by Product
- 7.Enhancements by Minimum Tools
- 8.Applied Bugs by Image Lag
- 9.Multi-lingual Bugs by Language
- 10.Bugs by Image Applied From
- 11.Bugs by Dependency
- 12.Customization Impacts by Bug

<https://support.oracle.com/epmos/faces/DocumentDisplay?id=1641843.2>

PeopleSoft Update Manager Dashboard

Contents

- Home
- Products
 - General Information
 - Development Tools
 - Reporting and Analysis Tools
 - Integration Tools
 - Administration Tools
- Lifecycle Management Tools
 - Change Assistant and Update Manager
 - Getting Started with PeopleSoft Change Assistant
 - Understanding The Environment Management Framework and PeopleSoft Change Assistant
 - Configuring and Running Environment Management Components

Update Manager Dashboard Overview

The Update Manager Dashboard provides a central location for all update tasks. The dashboard provides analytics for PUM (PeopleSoft Update Manager) that assist in determining your current level of maintenance. The various pivot grids provided on the dashboard, provide access into the maintenance logs and bug information for each database uploaded to the PeopleSoft Update Image. After drilling down onto a specific pivot grid, you can select bugs to include in a change package.

Image: Update Manager Dashboard

This example illustrates the fields and controls on the Update Manager Dashboard. You can find definitions for the fields and controls later on this page.

My Update Manager Dashboard

Select Target Database: H000PRP, H0053TD, H00546A

Define Change Package, Integrate With CFO Tool, Change Package Utilities, Customization Repository, Test Repository, About PeopleSoft Image

Database Bug Status, Bugs By Tag, Bugs By Image, Bugs by Product, Enhancements by Image, Enhancements by Product, Enhancements by Minimum To..., Applied Bugs by Image Lag, Multi-lingual Bugs By Language, Bugs By Image Applied From, Bugs By Dependency, Customization Impacts By Bug

- 1.Database Bug Status
- 2.Bugs by Tag
- 3.Bugs by Product
- 4.Bugs by Image
- 5.Enhancements by Image
- 6.Enhancements by Product
- 7.Enhancements by Minimum Tools
- 8.Applied Bugs by Image Lag
- 9.Multi-lingual Bugs by Language
- 10.Bugs by Image Applied From
- 11.Bugs by Dependency
- 12.Customization Impacts by Bug

<https://support.oracle.com/epmos/faces/DocumentDisplay?id=1641843.2>

Guiding Tools & Deployment Strategy

Organization is in control, what to apply & when to apply (pick and choose)

- Tax, Regulatory, Security, Critical updates, & PeopleTools patches
- Low-cost high impact/value
- Other features & PT upgrade every 12-16 months

https://docs.oracle.com/cd/E52319_01/infoportal/psa.html#StayInformed

Guiding Tools for your environment by release

- PUM Manager Homepage
- PUM Manager Dashboard

https://docs.oracle.com/cd/E66686_01/pt855pbr1/eng/pt/tswu/concept_UpdateManagerDashboardOverview.html

Note: If you wait for years to get up to date on PUM images, the effort is large, and you've lost time using the new features.

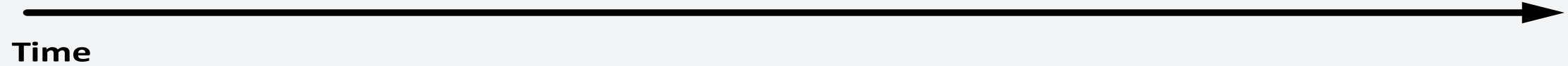
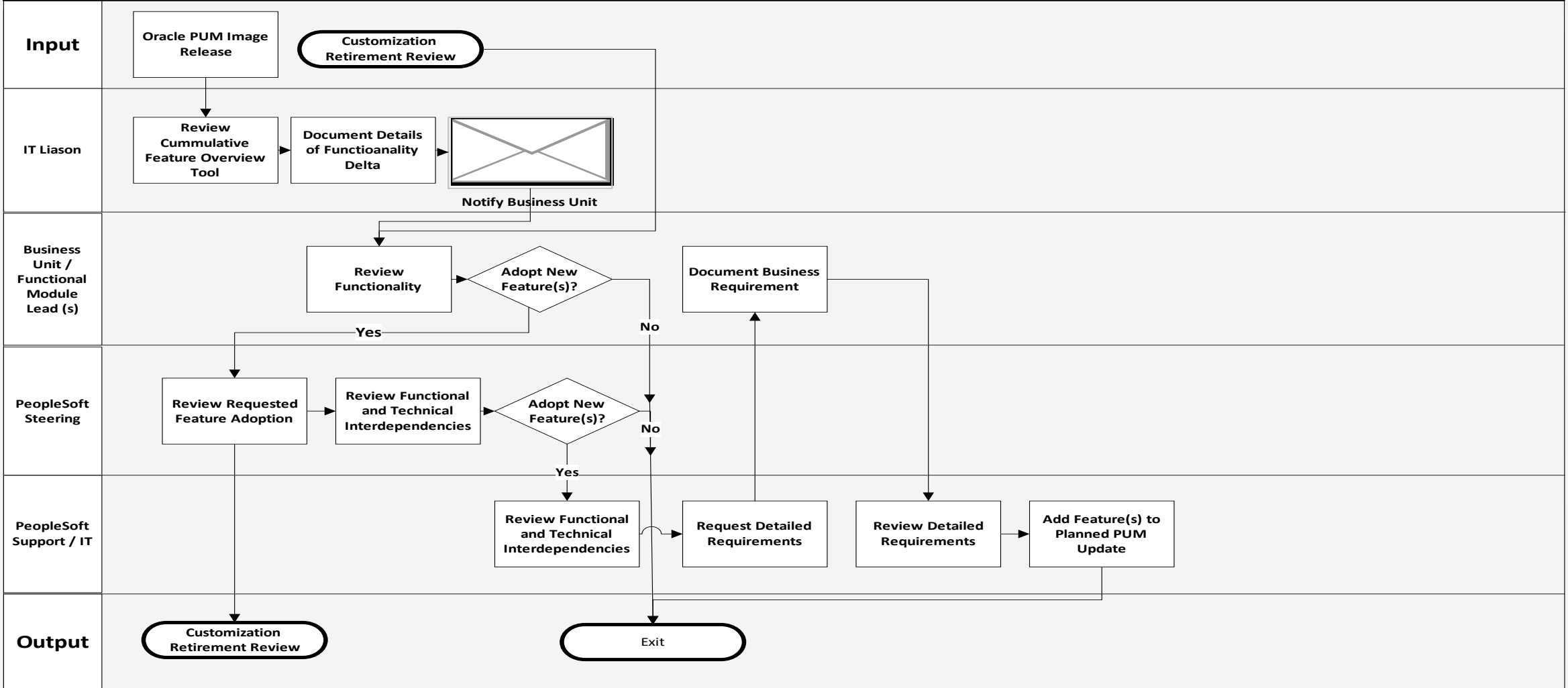
PeopleSoft Selective Adoption PUM Image Review

Superior Process Name: PeopleSoft Support

Created By: Peter Koutroubis

Created Date: 11/18/2020

Version#: 1.0



DESCRIPTION

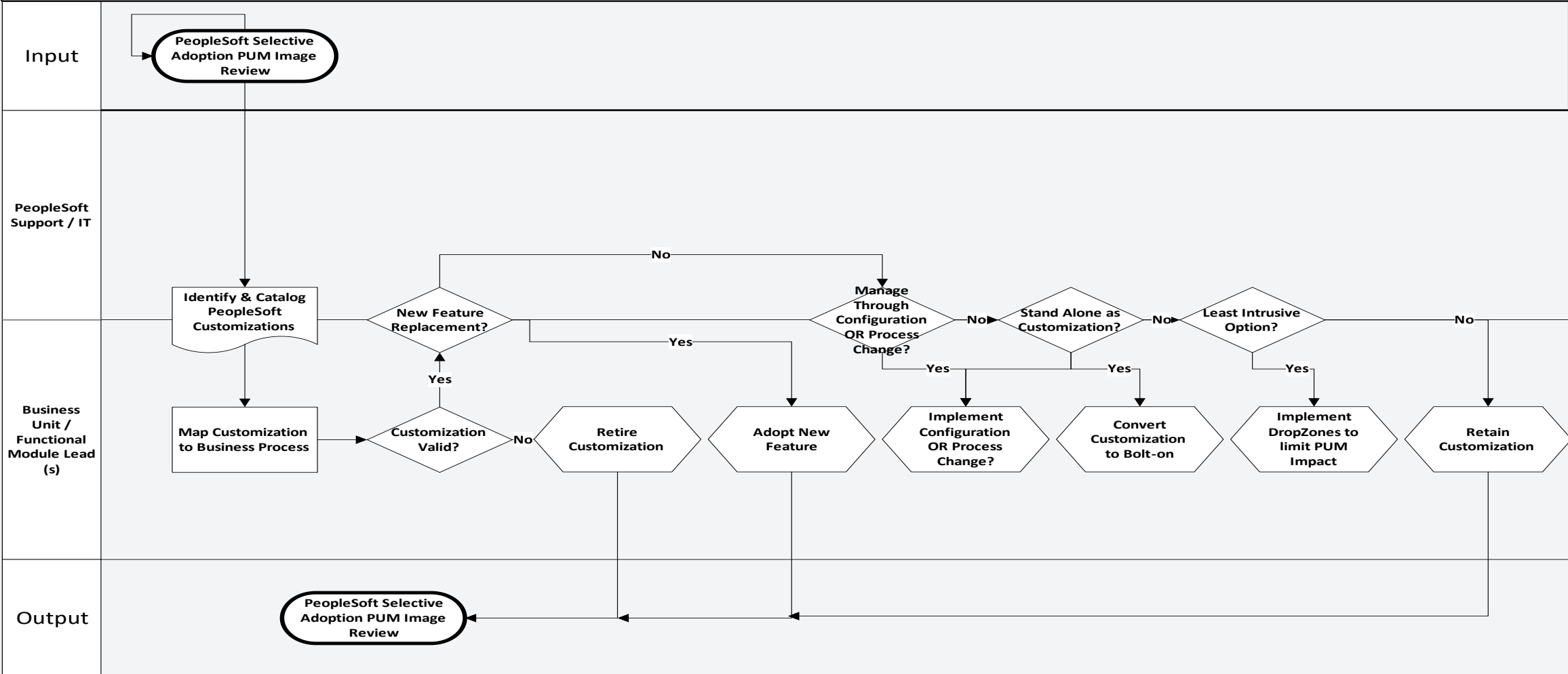
PeopleSoft Customization Retirement Review

Superior Process Name: PeopleSoft Selective Adoption PUM Image Review

Created By: Peter Koutroubis

Created Date: 11/18/20

Version#: 1.0



Time

PeopleSoft Test Automation Strategy

Testing is the largest part of any project:

- PeopleSoft Testing Framework vs testing automation tools
- Modification of test scripts to account for customization

Start your regression tests by:

- Automating testing of mature / stable products, not new development
- Have functional users design tests and technical users build and run tests
 - Implementing a test documentation policy, which is key

Build repeatable portable tests (PTF):

- Migrate tests from environments
- Page prompting allows for direct page access (navigation free)
 - Scroll prompting to identify by key not index
 - Cross reference reports

PeopleSoft Selective Adoption

Conclusion:

- Selective Adoption Process works for maintenance and feature updates
- Successful organizations understand PUM and establish processes to take advantage
- Features are available to customers every quarter

PeopleSoft Selective Adoption

How SMACT optimizes your organizational PeopleSoft Selective Adoption Strategy?

SMACT was conceived, designed, built and evolved solely to provide PeopleSoft service.

SMACT has a unique PeopleSoft Selective Adoption Strategy with the following.

- Developing a transition strategy from a reactive organization to PeopleSoft proactive
- Developing a roadmap and set schedule for adopting features and functions
- Full managed services for the application of PUM Images, Fixes, and Features
- Full managed services for PeopleSoft PeopleTools upgrades
- Security and Testing Automation service options to complete the adoption process

धन्यवाद

Hindi

多謝

Traditional Chinese

どうも

Japanese

ขอบพระคุณ

Thai

Спасибо

Russian

Gracias

Spanish

شكراً

Thank You

Telugu

Obrigado

Brazilian Portuguese

Grazie

Italian

Danke

German

Merci

French

ἘΥΧΑΡΙΣΤΩ

Ancient Greek

நன்றி

Tamil

多谢

Simplified Chinese

감사합니다

Korean

Yuscotoya

Zulu

ありがとうございました

Japanese

Ευχαριστώ

Modern Greek



SMACT Works®
Excellence with Integrity

PLEASE GET IN TOUCH

pkoutroubis@smactworks.com

727-421-3170

Thank you!

